

DECK MOUNT MANUAL SOAP DISPENSER INSTALLATION INSTRUCTIONS



PRIOR TO INSTALLATION

Please read installation instructions below. All plumbing should be installed in accordance with applicable building codes and regulations.

Unpack and inspect the items for any shipping damages. If you find damages, do not install.

All products must be installed by a professional and certified plumber otherwise warranty may be voided.

POSSIBLE TOOLS REQUIRED*



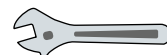
Plumbers Tape



Tape Measure



Level



Adjustable Wrench



Hex Wrench



Thread Sealant



Drill



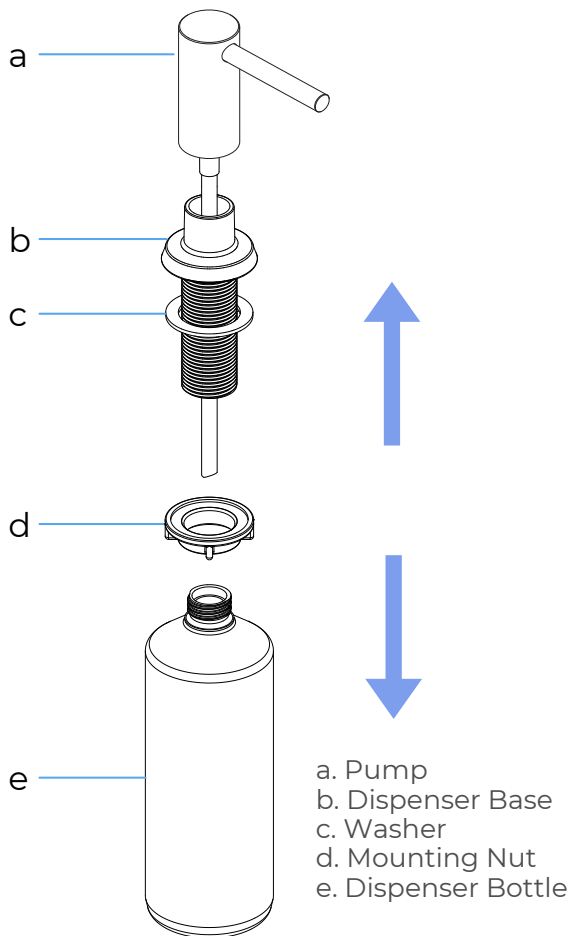
Pencil or Marker



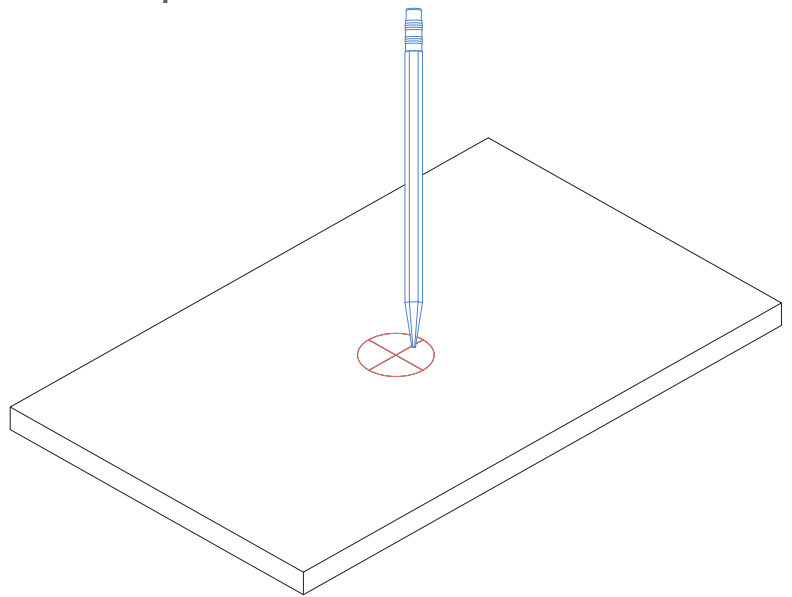
Screwdriver

*not included

Installation Instructions

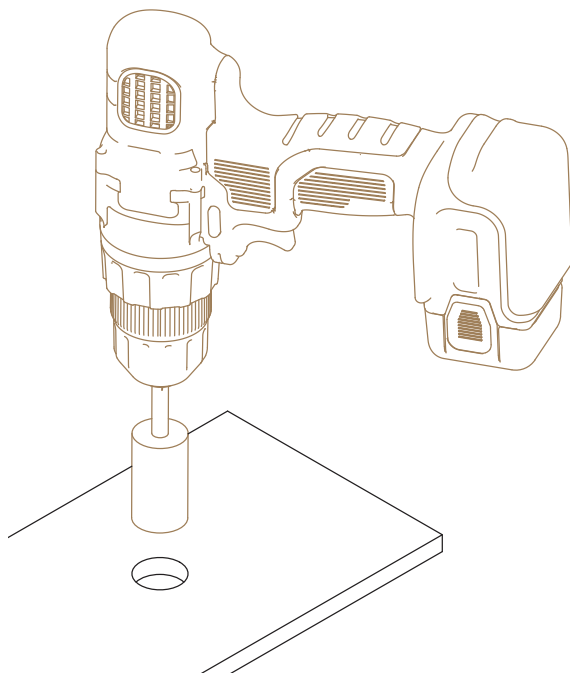


Step 1:



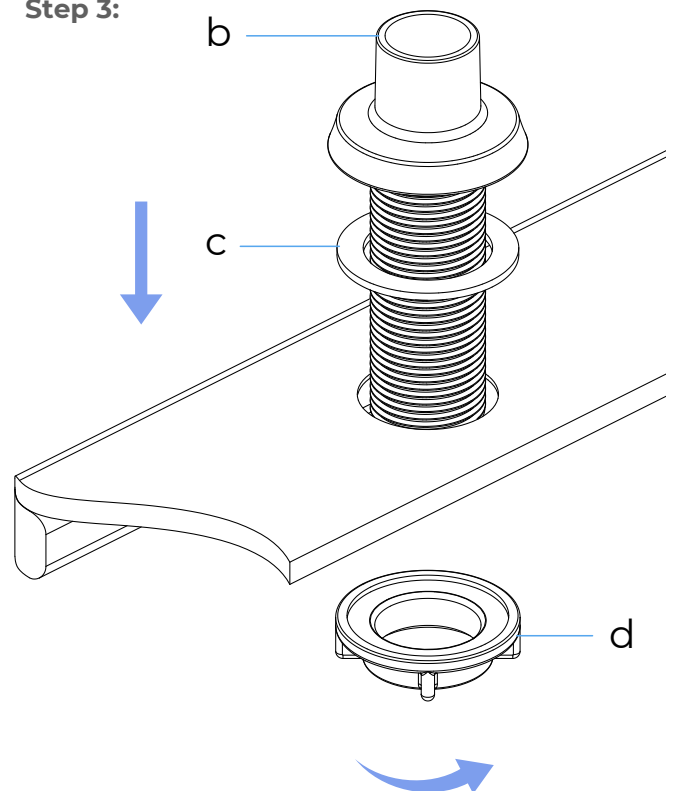
Mark soap hole centres onto the surface for installation.

Step 2:

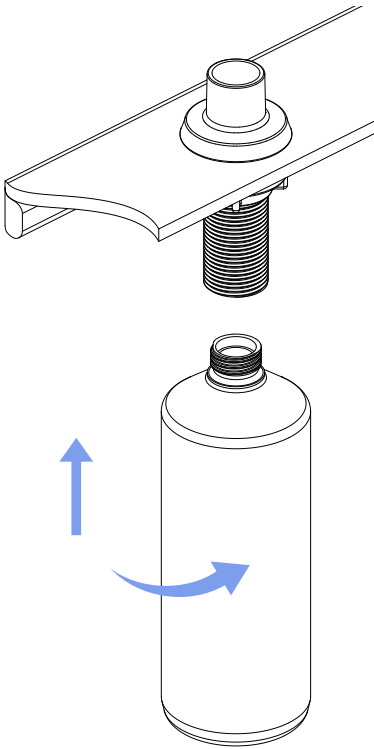


Drill 25 mm diameter hole in countertop.

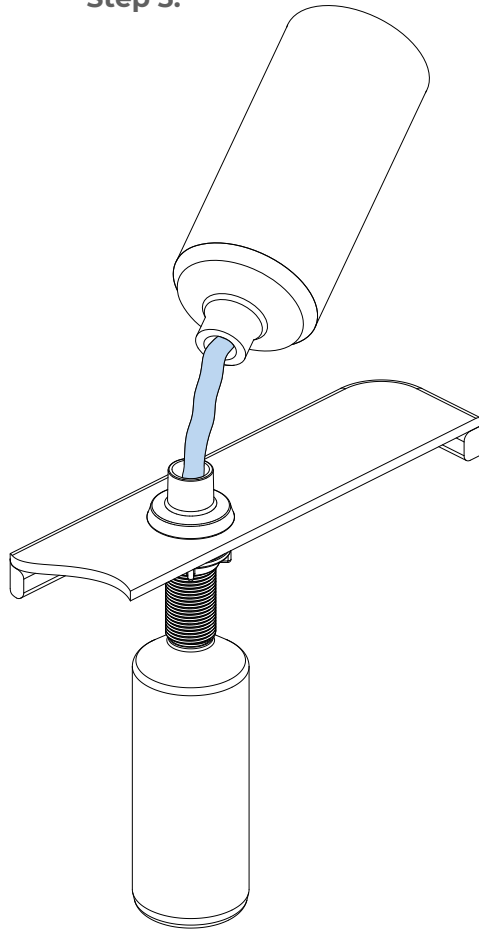
Step 3:



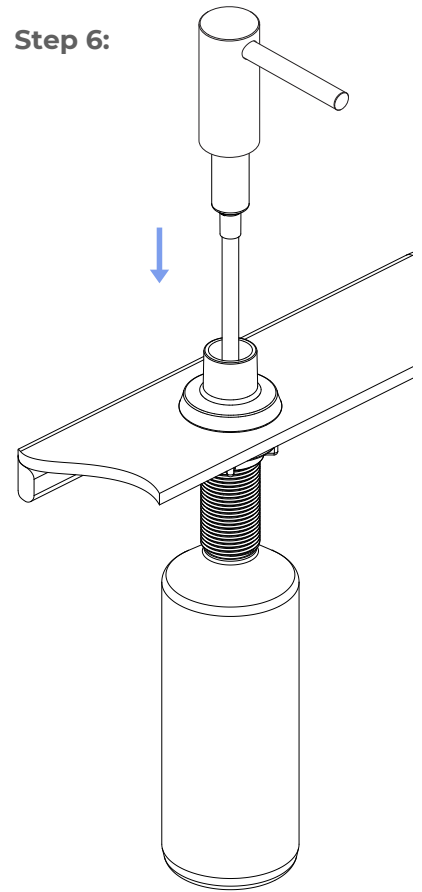
Step 4:



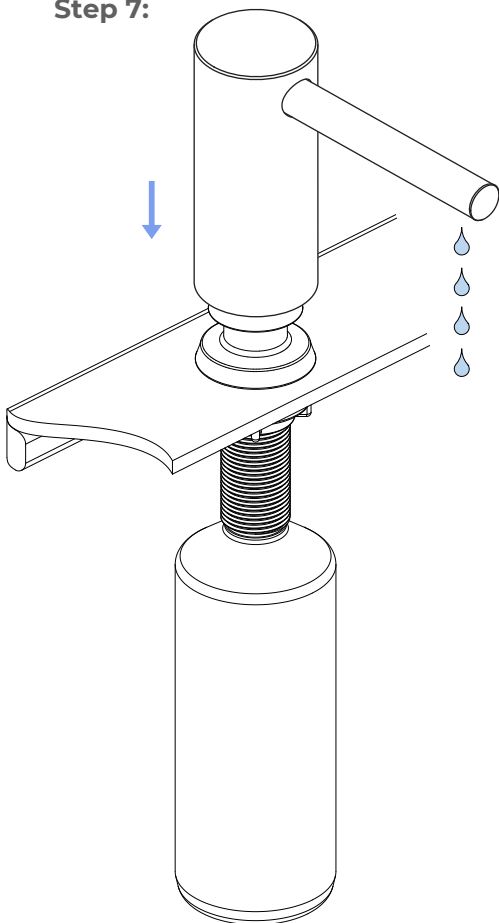
Step 5:



Step 6:



Step 7:



Disassemble soap dispenser

1. Install dispenser base (b) with washer (c) attached into the hole in the countertop. Re-install mounting nut (d) on the dispenser base (b) from underneath the countertop. Tighten mounting nut (d) by hand.
2. Screw the dispenser bottle to the dispenser base from underneath the countertop. Tighten as required.
3. Fill the dispenser bottle from the top with liquid soap.
4. Reinsert the pump into the dispenser base from the top.
5. Press the pump several times to make sure soap is evenly distributed.

Easy To Refill: Simply remove the pump head and refill from the top, no more crawling under the sink to remove the bottle.

DECK MOUNT MANUAL SOAP DISPENSER SPECIFICATIONS



1.Split soap bottle

2.Insert the straw
into the slot

3.Fixed straw



4.Tighten the bottle

5.Pour in cleaning
solution

6.Insert the straw
and tighten

Product shown is only for installation display purpose

Specs

Refill from the top, Large Capacity bottle: 500 ml (17oz)

Simple Installation and requires only one hole

Can be repeatedly used to add equipment soap hand sanitizer, shampoo, shower gel, etc. And perfect for any at home cleaning, cooking, or DIY uses.

Top-quality brass construction for long-lasting functionality

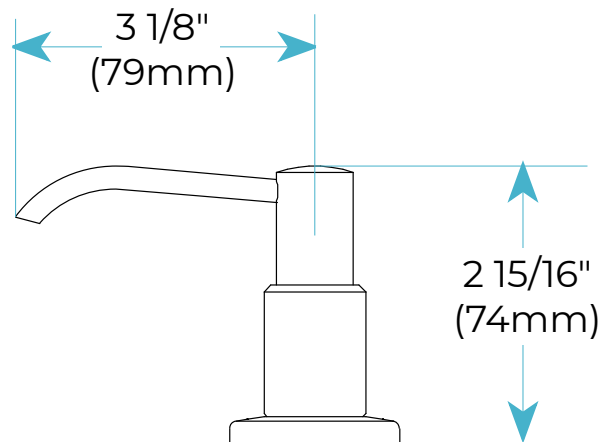
Self-priming pump for hassle-free use

Large-capacity bottle holds up to 17 oz. of liquid, requiring fewer refills

Easy to install threaded connection offers a tight, waterproof seal

Easy to refill: Top lifts up for easy refill

Size



FEATURES

ABOVE THE COUNTER RE-FILL -- The soap dispenser for kitchen sink replacement with pull-out removable pump head makes refilling this sink soap dispenser a breeze. No more crawling under the sink.

EASY TO PUMP -- This soap dispenser has a long nozzle that reaches over the sink, the pump head swivels 360 degrees. You can pump it and output a suitable amount of soap easily. There is no leak, clog or jam when pressing for soap.

LARGER VOLUME --The soap dispenser for kitchen sink has large capacity (17 oz) bottle. Dish soap can be pumped into the sink. Manufactured with quality materials and can work as a soap dispenser or as a lotion dispenser.

All dimensions and specifications are nominal and may vary. Use actual products for accuracy in critical situations.